

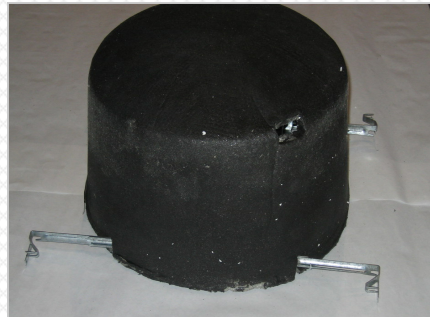


Step 1

Ensure the cover fits your chosen recessed light fixture.

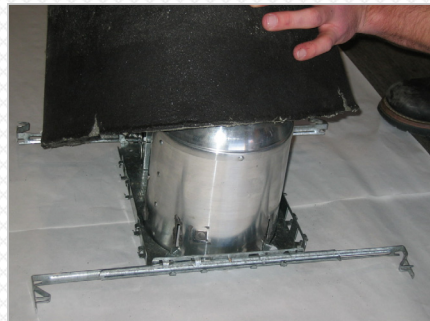
FF109-350 Overall Dimensions:

- Inside Diameter 15"
- Inside Height 10 3/8"



Step 2

Hanger bars of the light fixture shall be screwed to the joists in addition to the tabs being hammered into the joists, following the light manufacturer's installation instruction.



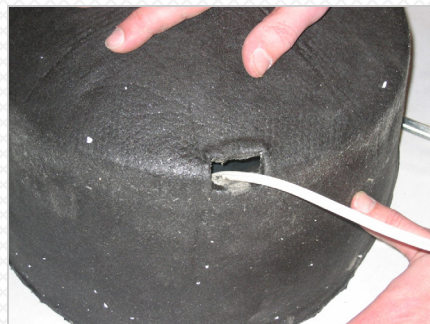
Step 3

Place Tenmat FF109 cover over the fixture.
Slit the cover to fit over the hanger bars of the fixture.
Cut four slits with a size up to 1" max.



Step 4

Install Recessed Fixture in accordance with manufacturer's instructions. The fixture can be installed in an opening having a max. diameter of 8".
Electrical wiring leading to and from the fixture may penetrate the cover. When this occurs, caution is to be used to not damage the cover.



Step 5

Put the cover on top of the fixture. Check for secure fit, and make sure the cover overhangs the hanger bars.
The FF 109 Light Cover must fit flush with the back surface of the drywall board.

